



IBSAR[®] School of Law

Criteria 7

7.1: Institutional Values and Social Responsibilities

7.1.3 Describe the facilities in the Institution for the management of the following types of degradable and non-degradable waste.



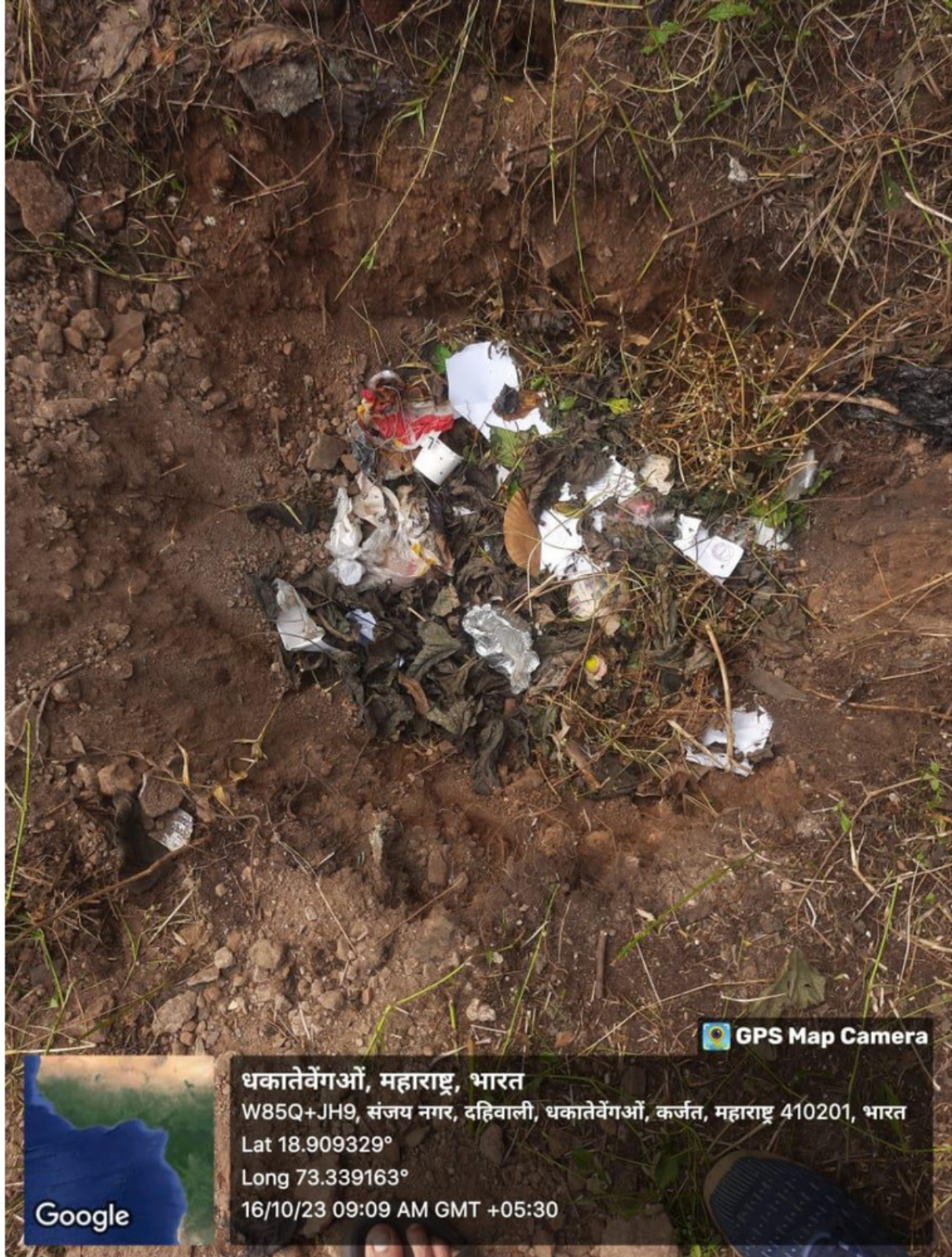
E-Waste Storage Space



Vinay V. Pundir

PRINCIPAL
IBSAR SCHOOL OF LAW
DAHIVALI, KARJAT,
DIST. RAIGAD-410201

Composting Potholes



Vinita V. Purohit

PRINCIPAL
IBSAR SCHOOL OF LAW
DAHIVALI, KARJAT,
DIST. RAIGAD-410201

Solid waste management




Vinita v. Pundir

PRINCIPAL
IBSAR SCHOOL OF LAW
DAHIVALI, KARJAT,
DIST RAIGAD-410201

Water waste management



 GPS Map Camera



Google

धकातेवेंगओं, महाराष्ट्र, भारत

W85Q+JH9, संजय नगर, दहिवाली, धकातेवेंगओं, कर्जत, महाराष्ट्र 410201, भारत

Lat 18.909329°

Long 73.339163°

15/10/23 04:15 PM GMT +05:30



Vinita V. Pundir

PRINCIPAL
IBSAR SCHOOL OF LAW
DAHIVALI, KARJAT,
DIST. RAIGAD-410201